

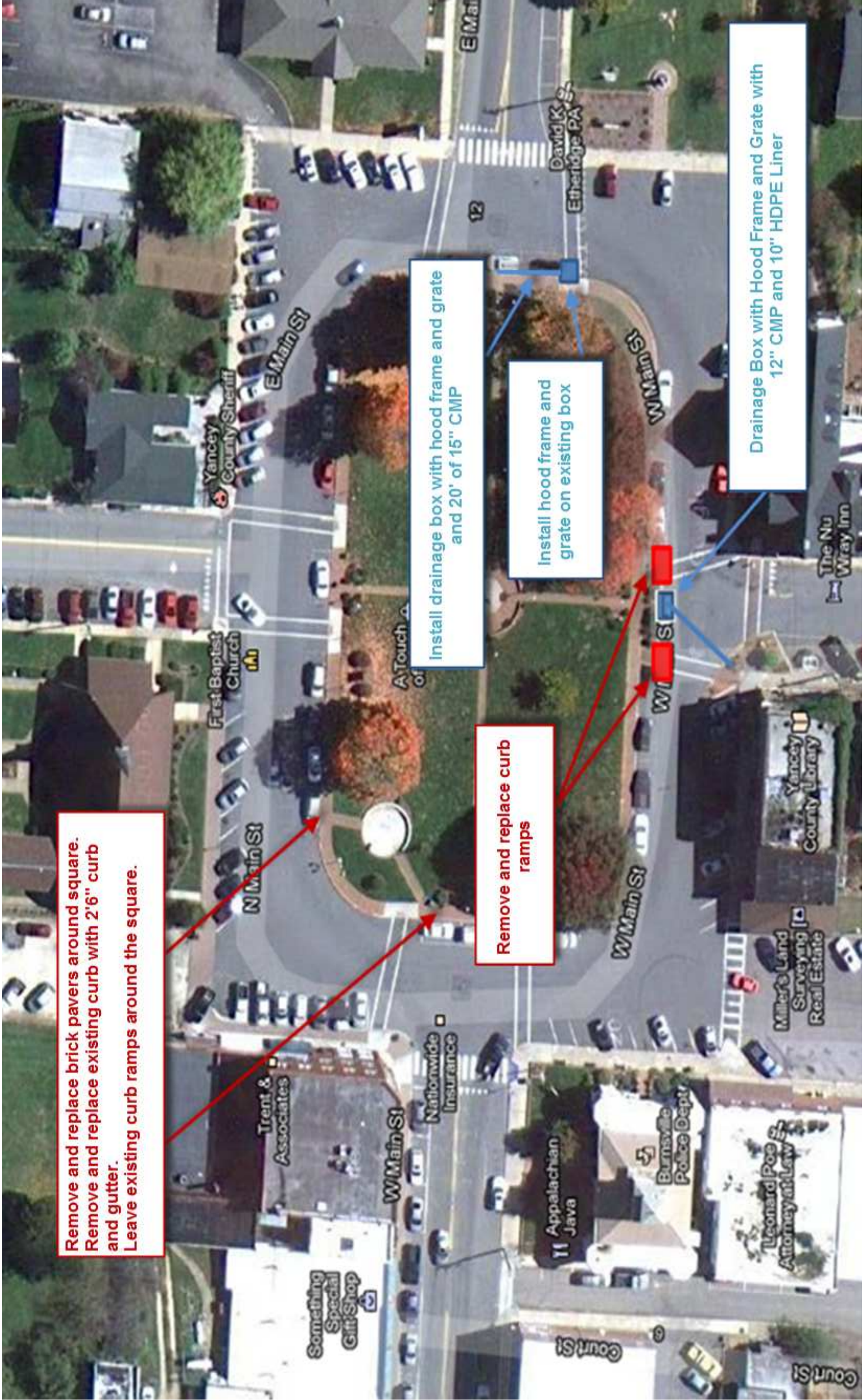
Remove and replace brick pavers around square.  
Remove and replace existing curb with 2'6" curb and gutter.  
Leave existing curb ramps around the square.

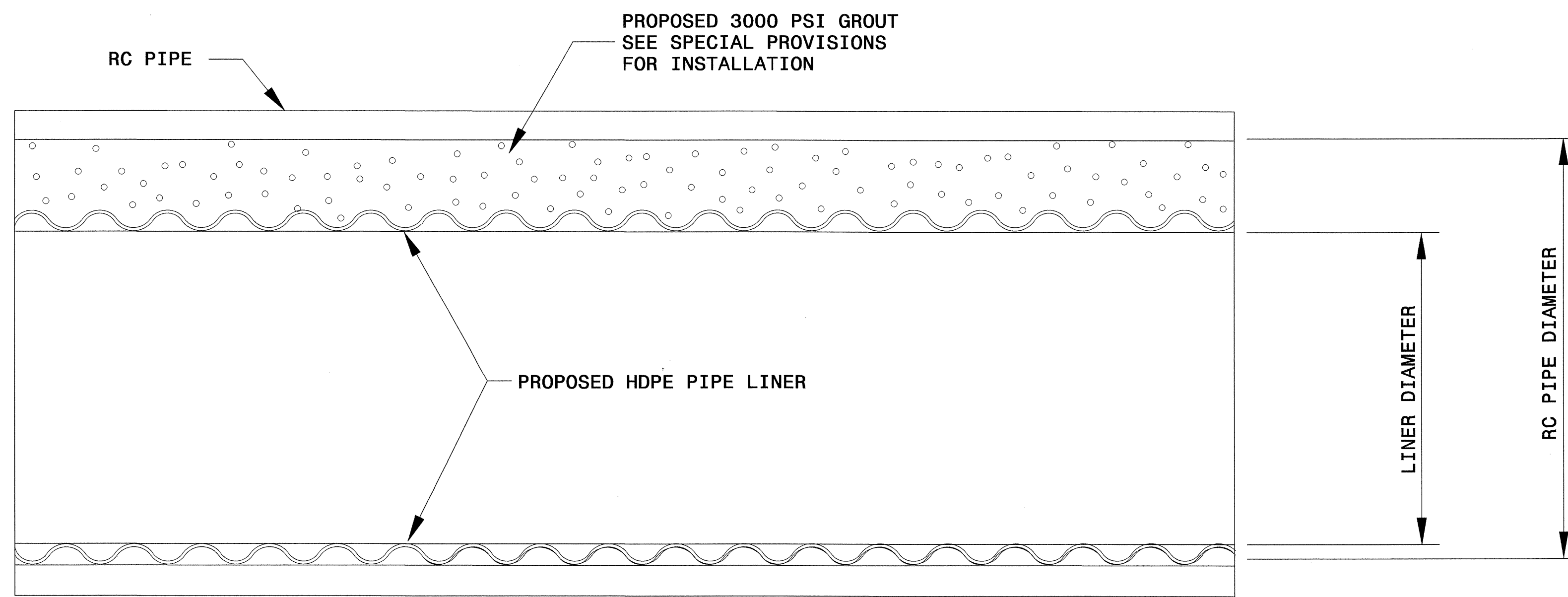
Remove and replace curb ramps

Install drainage box with hood frame and grate and 20' of 15" CMP

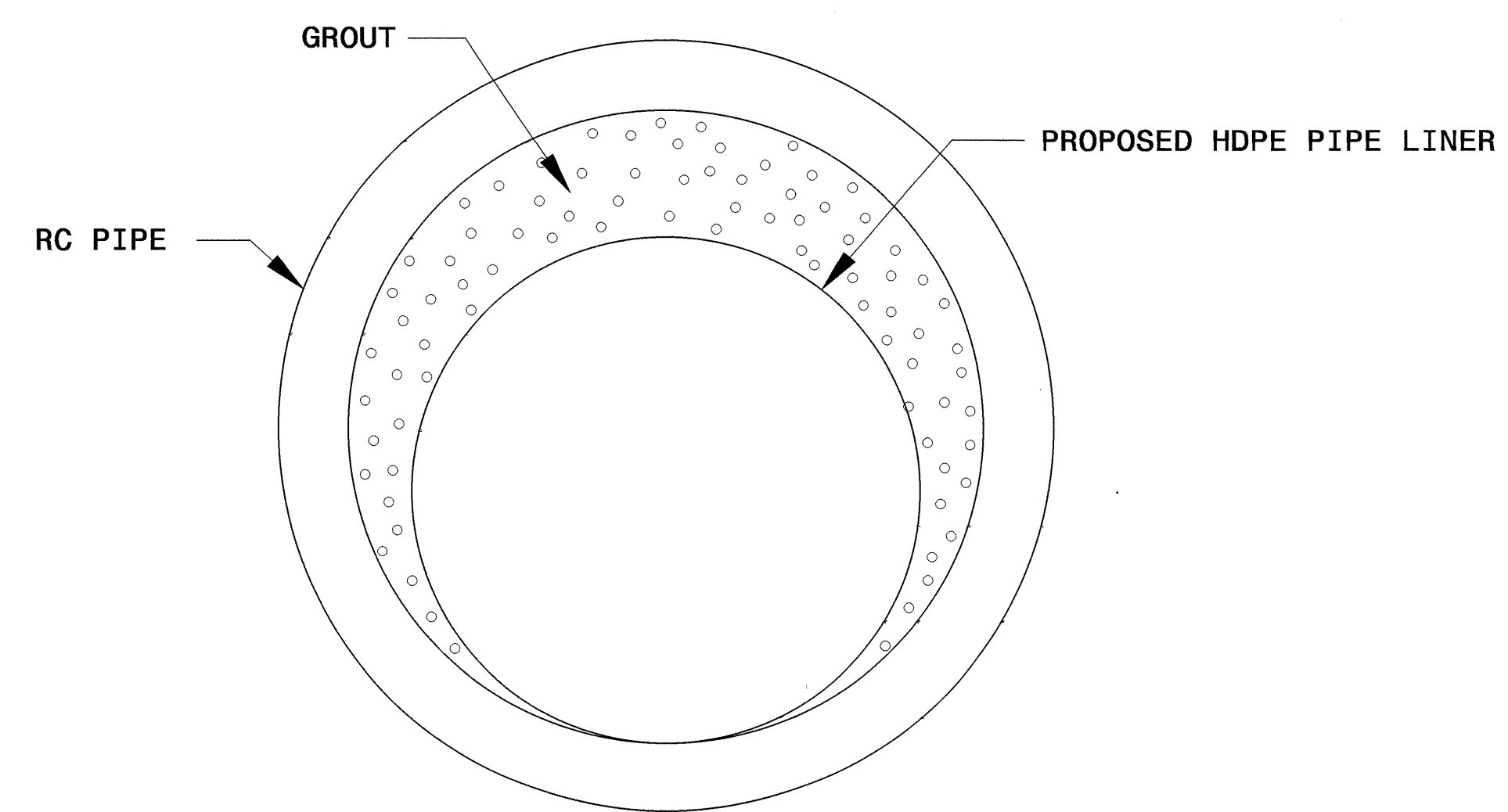
Install hood frame and grate on existing box

Drainage Box with Hood Frame and Grate with 12" CMP and 10" HDPE Liner





**ELEVATION**

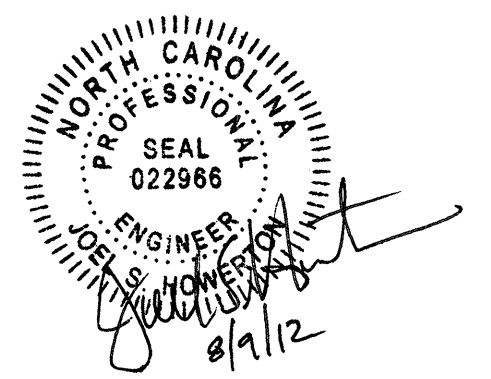


**END ELEVATION**

**GROUT QUANTITIES PER FOOT**

RCP SIZE (IN.)	HDPE LINER SIZE (IN.)	GROUT (YDS. <sup>3</sup> /FT.)
12	10	0.009
18	12	0.036
24	18	0.051
30	24	0.065
36	30	0.080

NOTE: SEE PLANS FOR PIPE LENGTHS AND LOCATIONS.

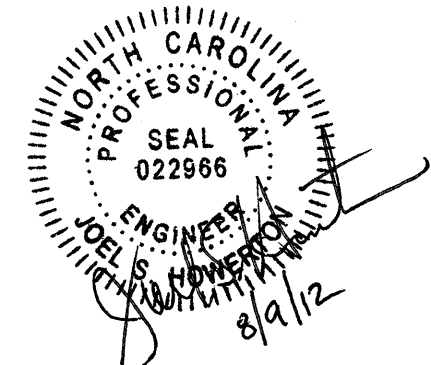
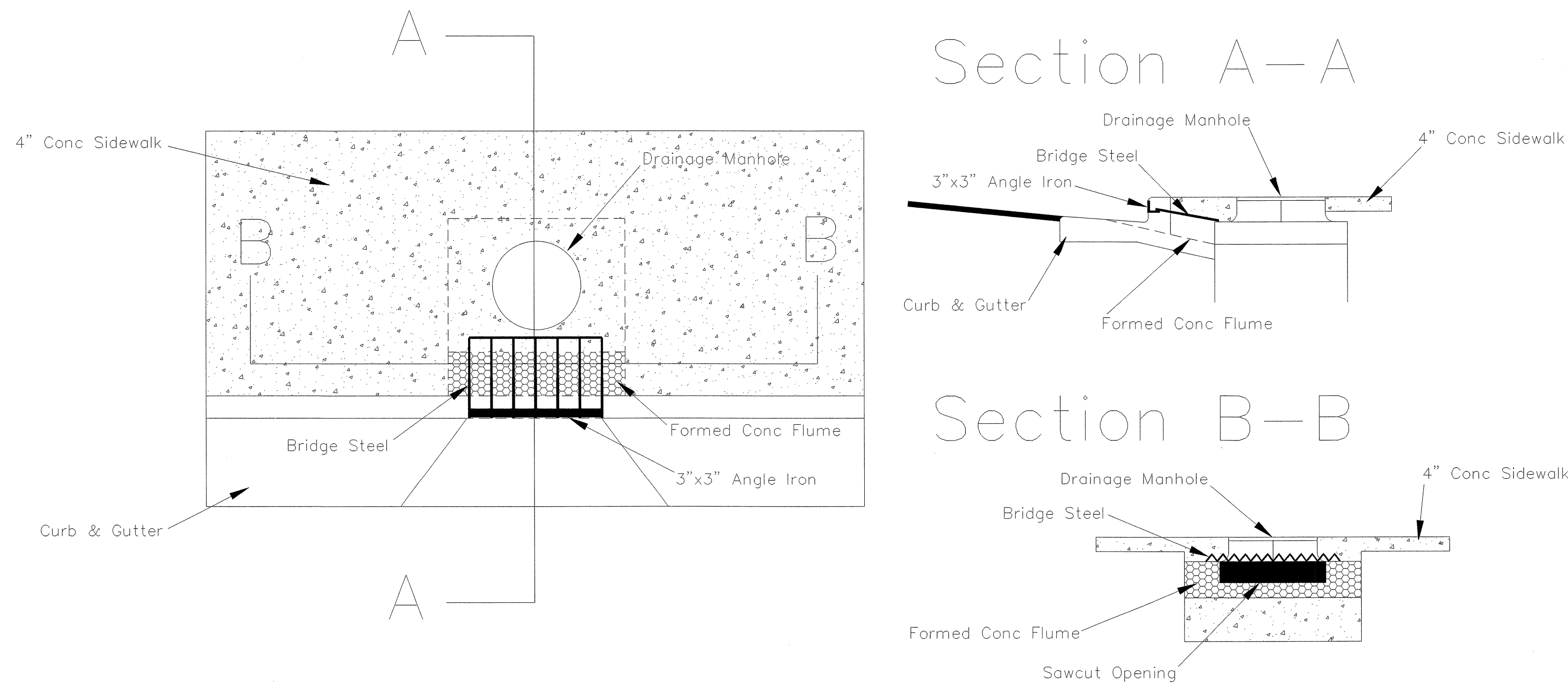


**CONTRACT STANDARDS  
AND DEVELOPMENT UNIT**  
Office 919-707-6950 FAX 919-250-4119

**HDPE PIPE LINER INSIDE  
AN RC PIPE**

ORIGINAL BY: T.Spell DATE: May 19, 1999  
 MODIFIED BY: DATE:  
 CHECKED BY: DATE:  
 FILE SPEC.: DS174:usr/details/metric/stand/liner.dgn

# Formed Concrete Flumes W/Bridge Steel Sidewalk Support



**DIVISION 13  
DISTRICT II OFFICE**  
Office 828-298-2741 FAX 828-299-3747

**FORMED CONCRETE FLUMES  
W/ BRIDGE STEEL SIDEWALK  
SUPPORT**

ORIGINAL BY: \_\_\_\_\_ DATE: \_\_\_\_\_  
 MODIFIED BY: \_\_\_\_\_ DATE: \_\_\_\_\_  
 CHECKED BY: \_\_\_\_\_ DATE: \_\_\_\_\_  
 FILE SPEC.: \_\_\_\_\_

5/14/99

PL 01  
 11  
 10  
 9  
 8  
 7  
 6  
 5  
 4  
 3  
 2  
 1